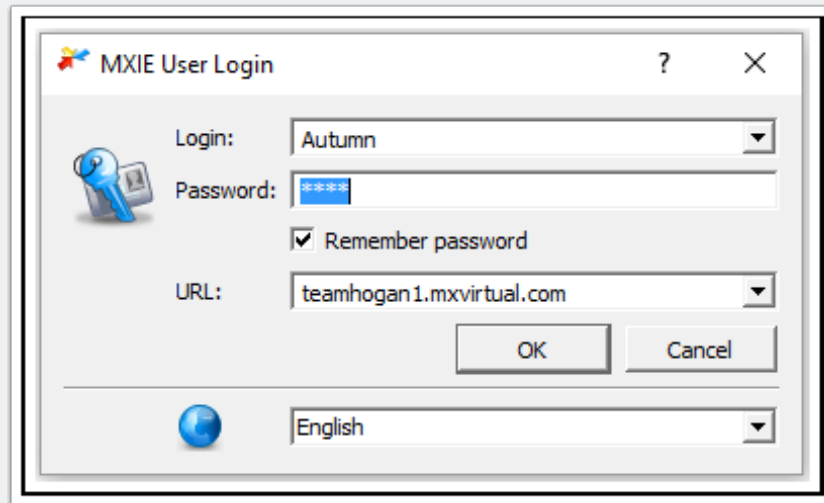


# How to bind by a call from the device

These steps will show you how to bind your MXIE and extension to any phone connected to the voice system.

## Step 1

Login to MXIE with your credentials



The screenshot shows a Windows-style dialog box titled "MXIE User Login". It contains the following fields and controls:

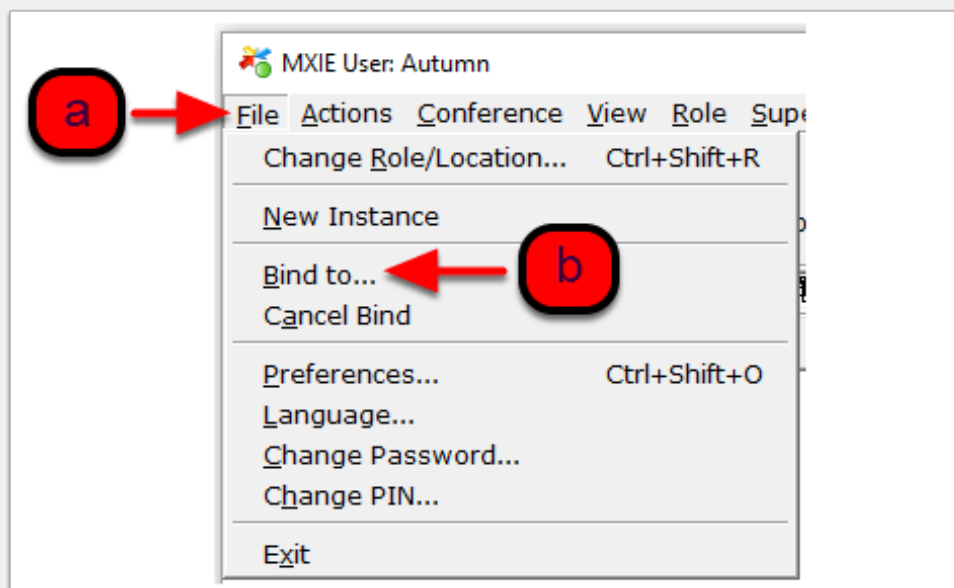
- Login:** A dropdown menu with "Autumn" selected.
- Password:** A text box containing "\*\*\*\*\*".
- Remember password
- URL:** A dropdown menu with "teamhogan1.mxvirtual.com" selected.
- OK** and **Cancel** buttons.
- Language:** A dropdown menu with "English" selected.

# How to bind by a call from the device

## Step 2

a.) Select file

b.) Select bind to

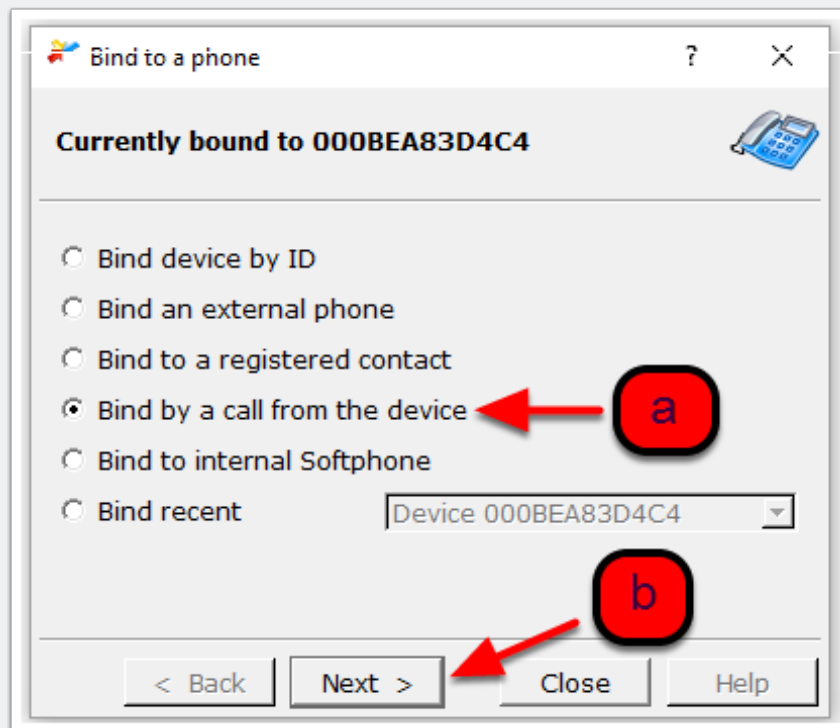


# How to bind by a call from the device

## Step 3

a.) Select bind by a call from the device

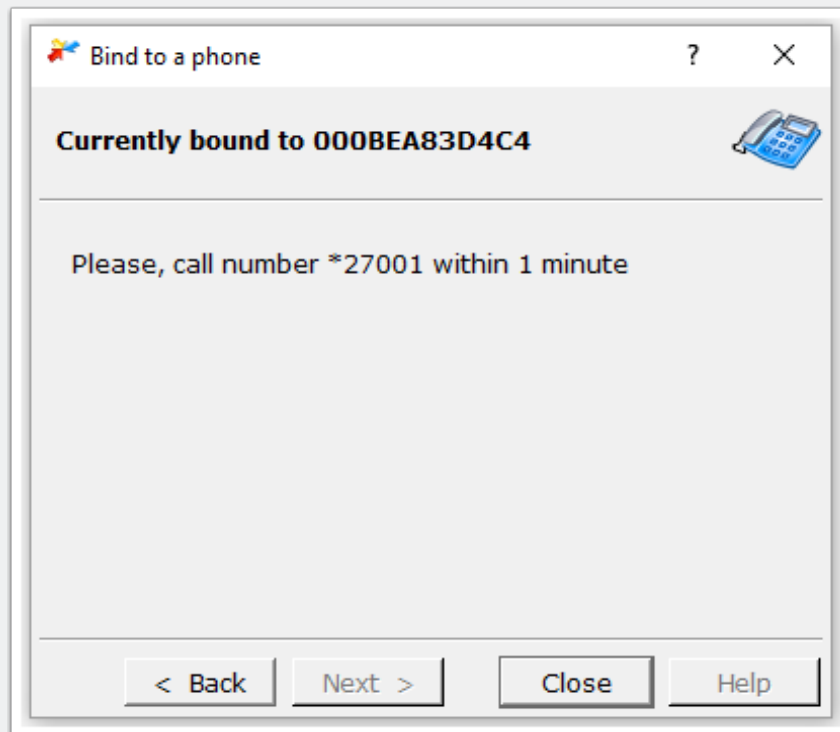
b.) Select next



# How to bind by a call from the device

## Step 4

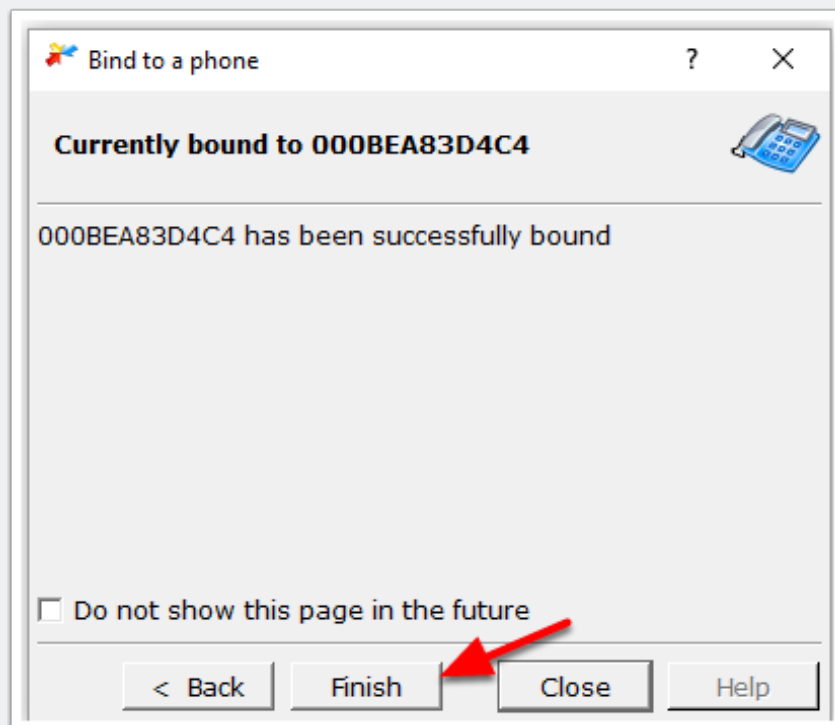
Dial the number shown on the screen from the phone



# How to bind by a call from the device

## Step 5

Select finish



# How to bind by a call from the device

## Step

When you are done using that phone you need to cancel the bind.

a.) Select file

b.) Select cancel bind

