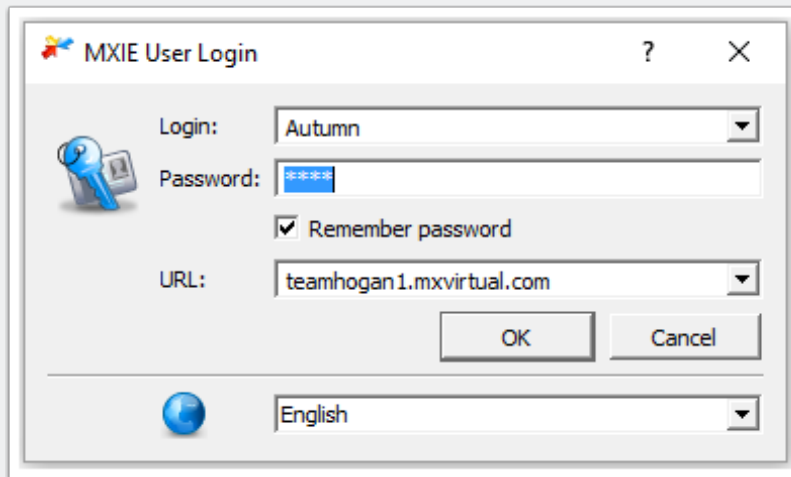


How to bind MXIE to your desk phone

Step 1

Login to MXIE

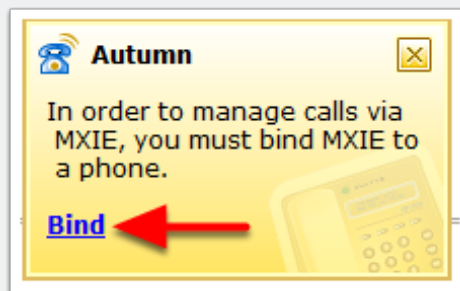


The screenshot shows a dialog box titled "MXIE User Login". It contains the following fields and controls:

- Login:** A dropdown menu with "Autumn" selected.
- Password:** A text input field with masked characters (dots).
- Remember password
- URL:** A dropdown menu with "teamhogan1.mxvirtual.com" selected.
- OK** and **Cancel** buttons.
- A language selection dropdown at the bottom with "English" selected.

Step 2

Select bind from the box in the lower right hand corner of the screen

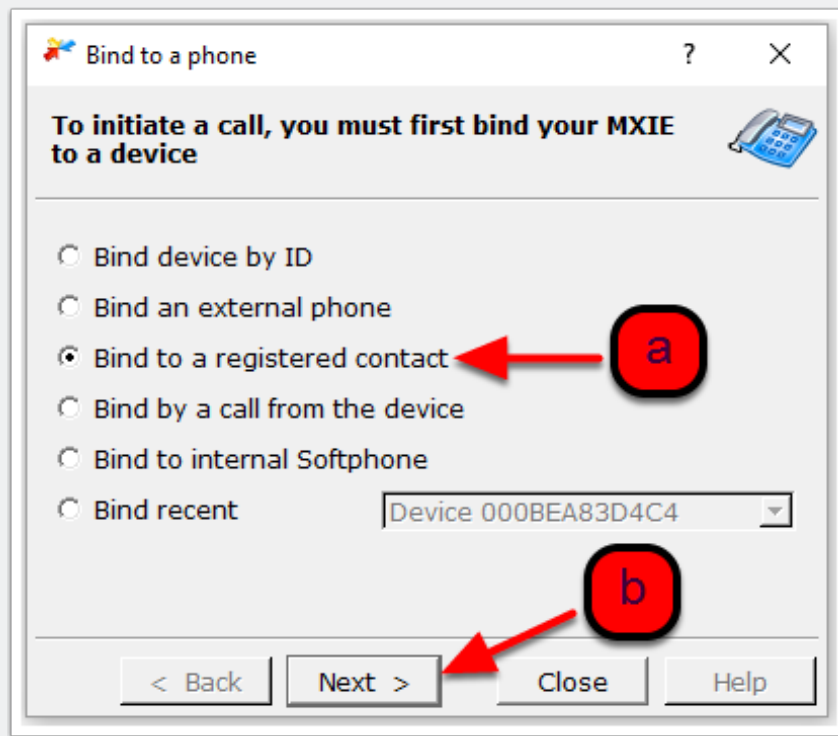


How to bind MXIE to your desk phone

Step 3

a.) Select bind to a registered contact

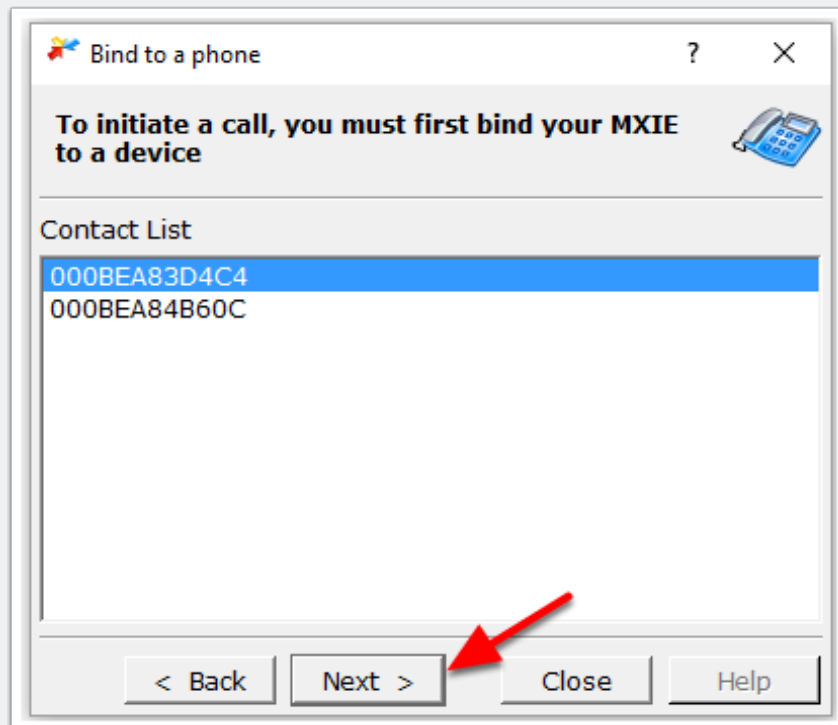
b.) Select next



How to bind MXIE to your desk phone

Step 4

Select next again



How to bind MXIE to your desk phone

Step 5

Select finish

