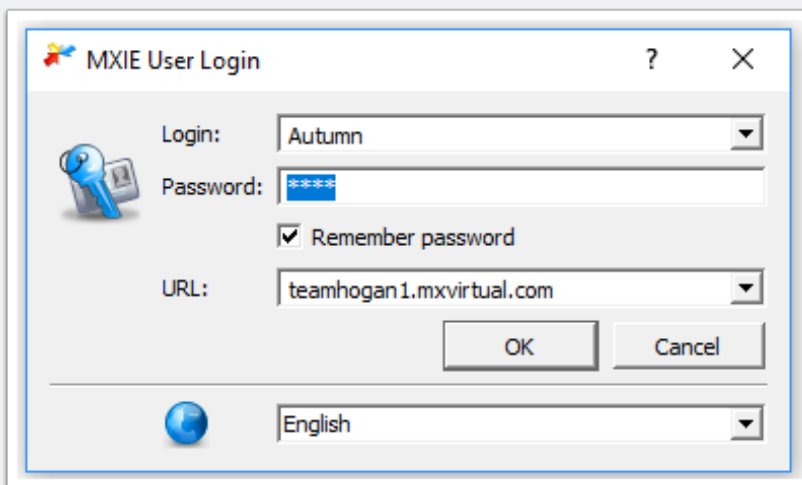


How to setup call forwarding in MXIE

With the ring no answer timer

Step 1

Login to MXIE



The screenshot shows a Windows-style dialog box titled "MXIE User Login". It contains the following fields and controls:

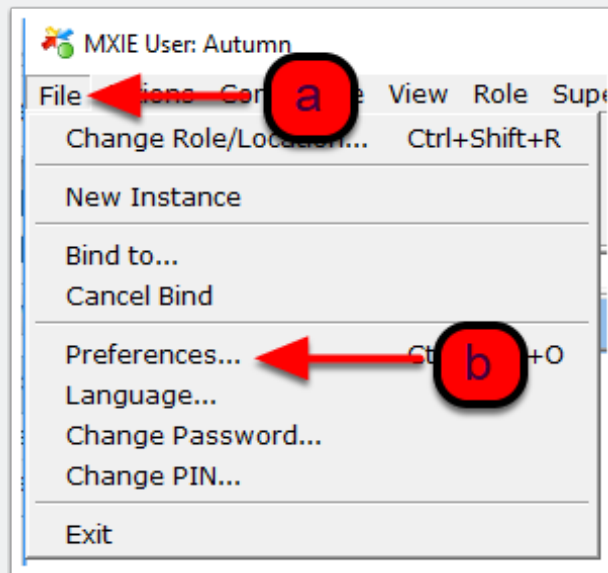
- Login:** A dropdown menu with "Autumn" selected.
- Password:** A text box containing "*****".
- Remember password**
- URL:** A dropdown menu with "teamhogan1.mxvirtual.com" selected.
- OK** and **Cancel** buttons.
- A horizontal separator line.
- A globe icon followed by a dropdown menu with "English" selected.

How to setup call forwarding in MXIE

Step 2

a.) File

b.) Preferences



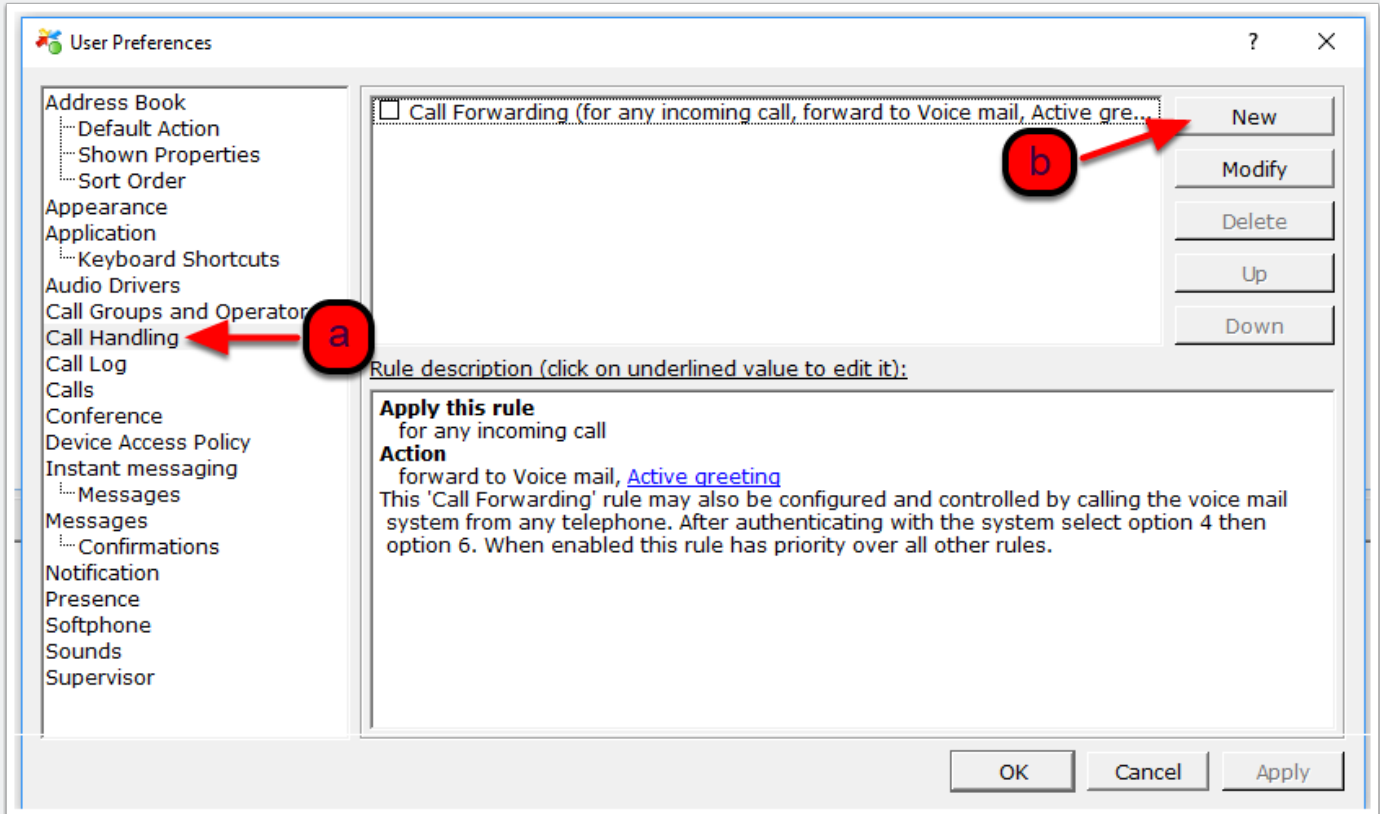
Step 3

Create a call handling rule:

a.) Call Handling

b.) New

How to setup call forwarding in MXIE



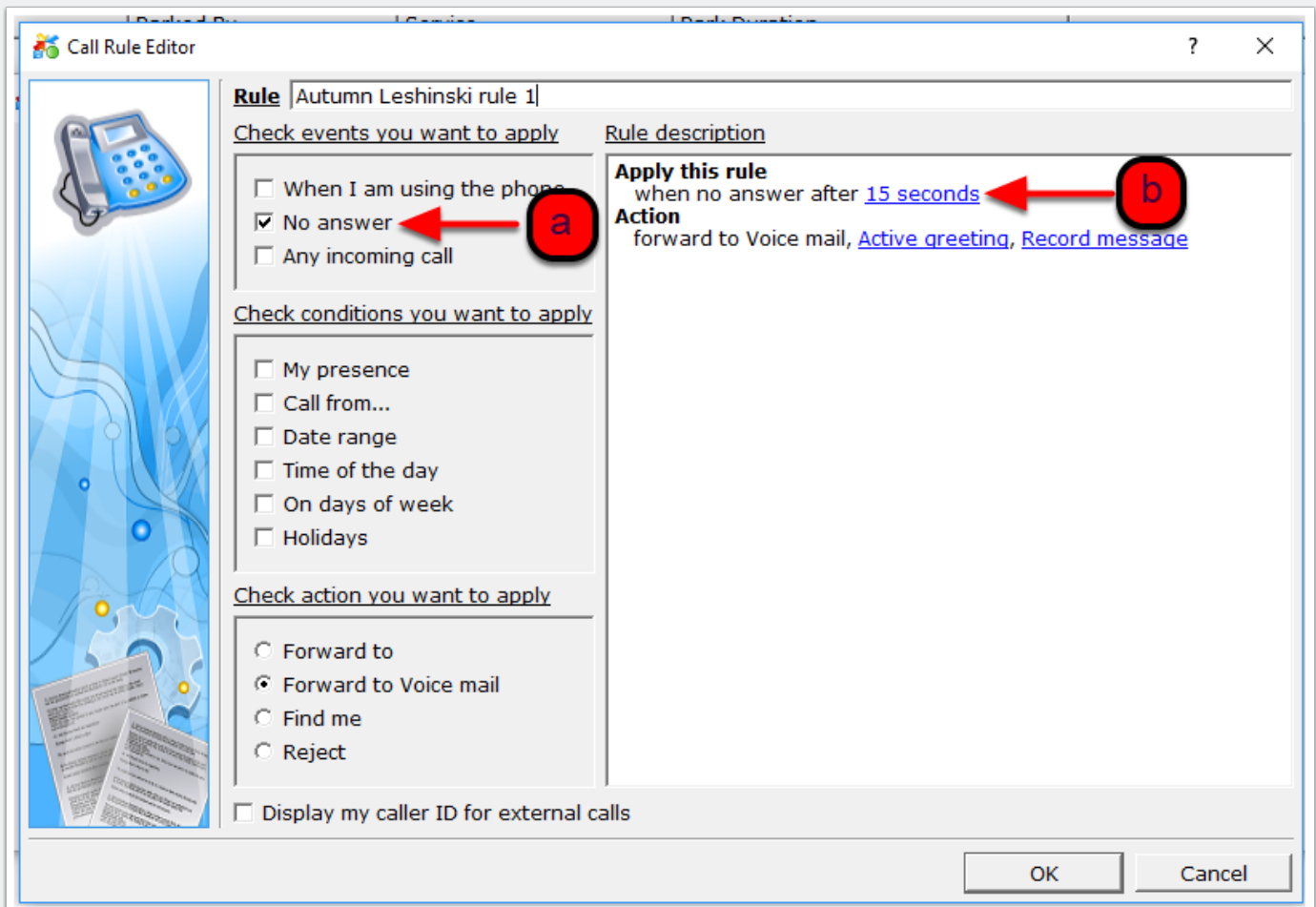
How to setup call forwarding in MXIE

Step 4

Create a rule based on the amount of seconds before forwarding to your cell phone:

a.) No answer

b.) Number of seconds (5 seconds/ring)



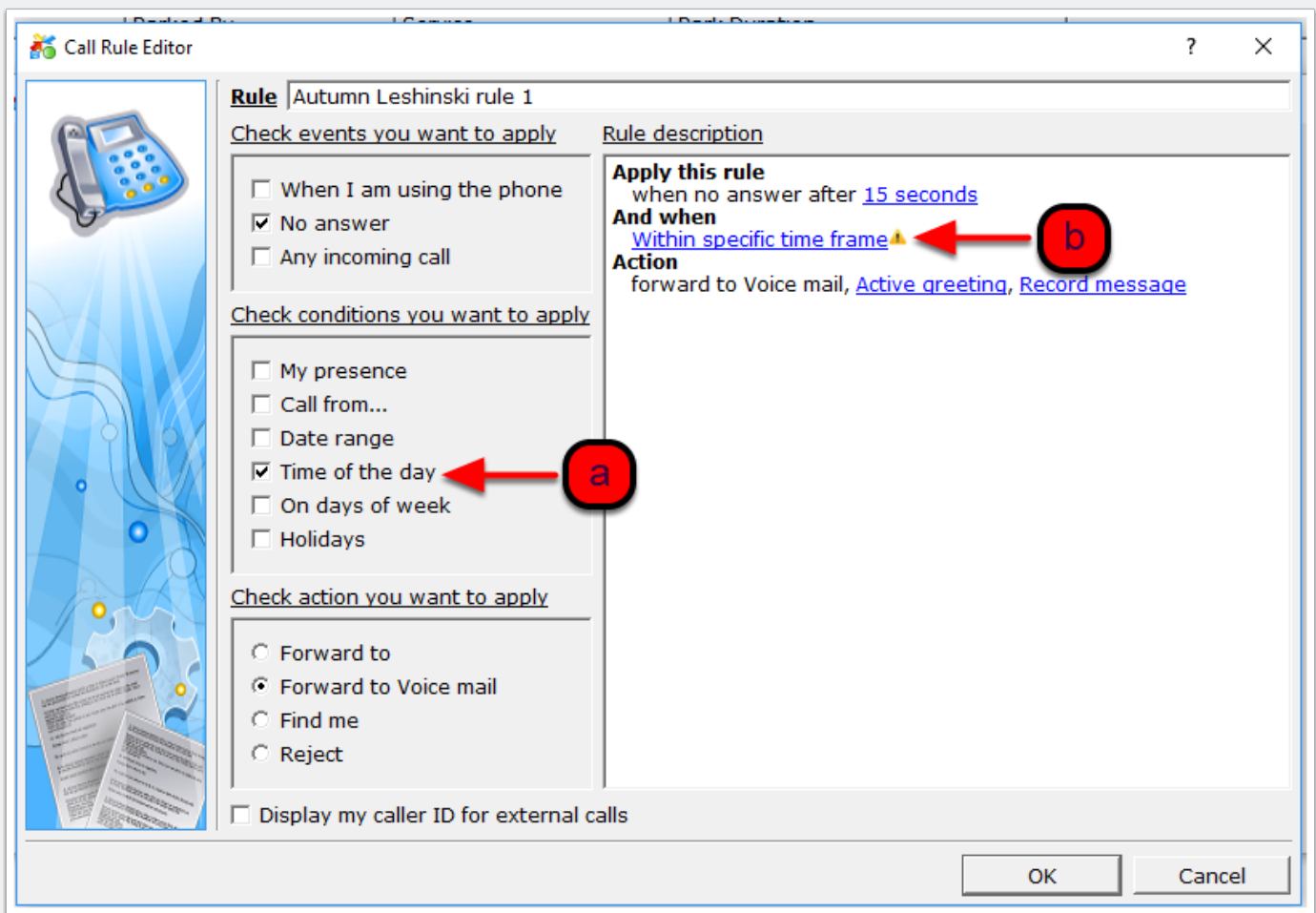
How to setup call forwarding in MXIE

Step 5

Select time of day

a.) Time of day

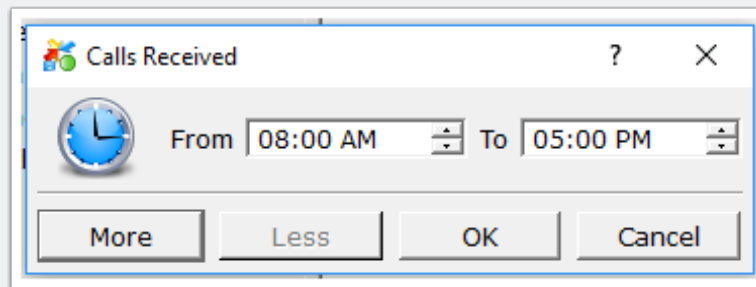
b.) Specific time frame



How to setup call forwarding in MXIE

Step 6

Enter the times and select ok



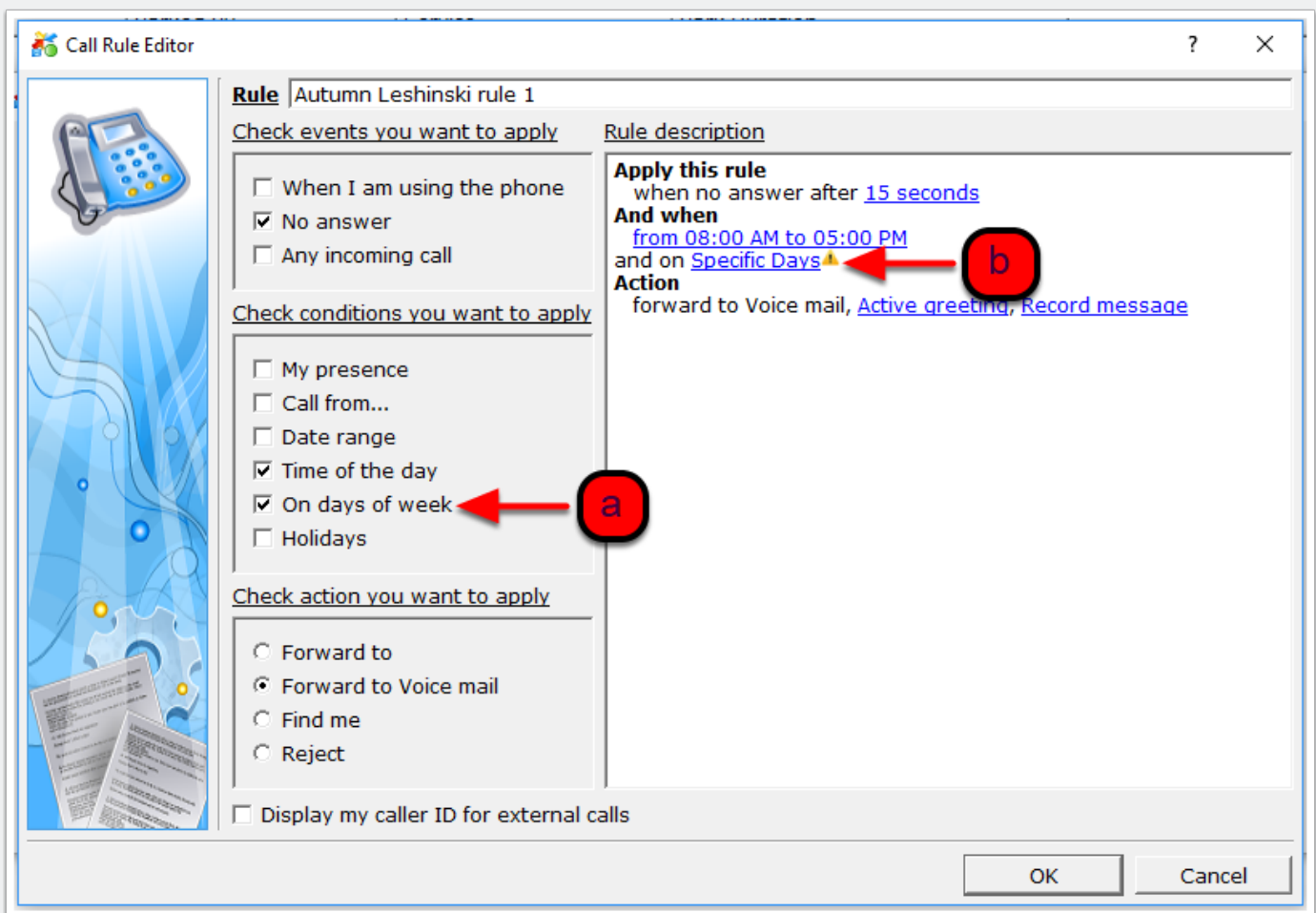
How to setup call forwarding in MXIE

Step 7

Select days of week

a.) On days of week

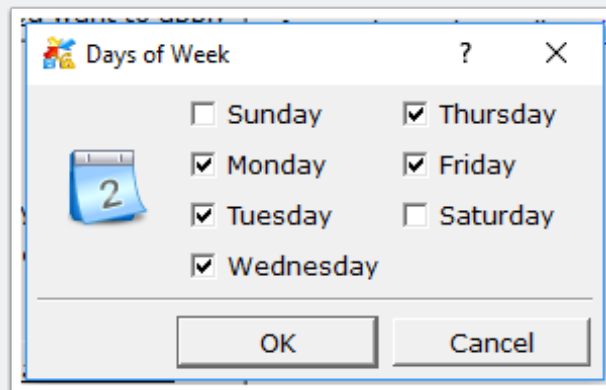
b.) Specific days



How to setup call forwarding in MXIE

Step 8

Check of the days and select ok



How to setup call forwarding in MXIE

Step 9

Choose Find me as the action

a.) Find me

b.) Please specify targets

The screenshot shows the 'Call Rule Editor' window for a rule named 'Autumn Leshinski rule 1'. The interface is divided into several sections:

- Check events you want to apply:** Includes checkboxes for 'When I am using the phone', 'No answer' (checked), and 'Any incoming call'.
- Check conditions you want to apply:** Includes checkboxes for 'My presence', 'Call from...', 'Date range', 'Time of the day' (checked), 'On days of week' (checked), and 'Holidays'.
- Check action you want to apply:** Includes radio buttons for 'Forward to', 'Forward to Voice mail', 'Find me' (selected), and 'Reject'. A red circle with the letter 'a' and an arrow points to the 'Find me' option.
- Rule description:** Shows the rule's logic: 'Apply this rule when no answer after 15 seconds', 'And when from 08:00 AM to 05:00 PM and on Mon-Fri', and 'Action Find me try please, specify target(s) for 20 seconds connect immediately'. A red circle with the letter 'b' and an arrow points to the 'please, specify target(s)' link.
- If unsuccessful:** Includes radio buttons for 'forward to Please, specify', 'forward to Voice mail, Active greeting, Record message' (selected), and 'reject'. There is also a checkbox for 'Provide updates to the caller while the system tries to find me'.
- Display my caller ID for external calls:** A checkbox that is currently unchecked.

At the bottom right of the window are 'OK' and 'Cancel' buttons.

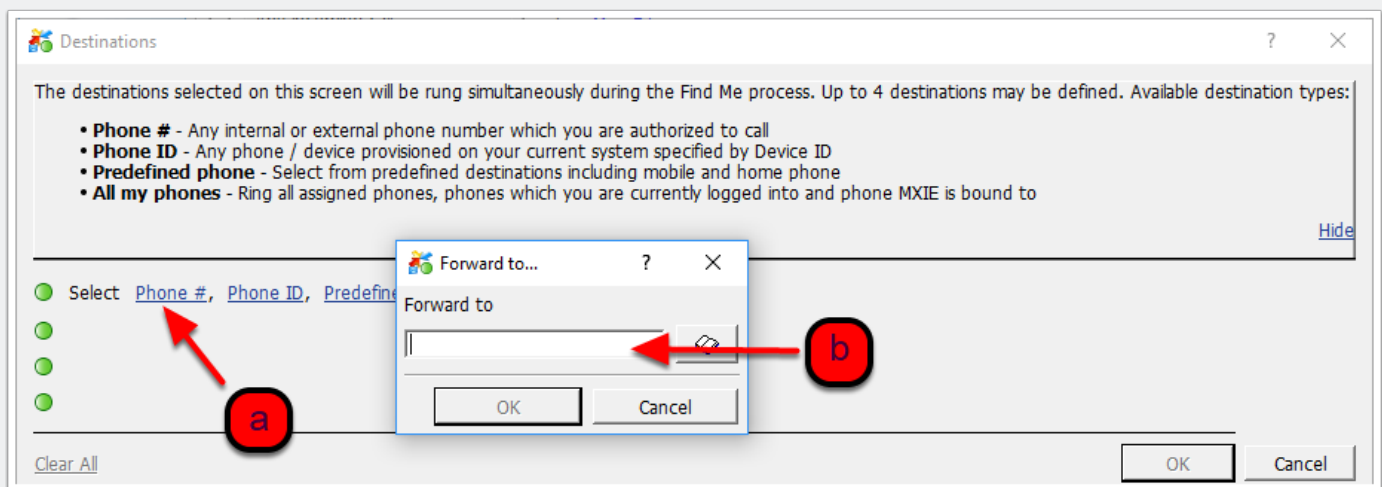
How to setup call forwarding in MXIE

Step 10

Enter the phone number

a.) Select Phone #

b.) Enter the number and click on OK



Step 11

Select OK and Apply